

成都艾可斯电气设备有限公司：BELDEN HIRSCHMANN LUMBERG HTP ICOS

FOR NETWORKS, YOU NEED POWER.

The ST-series brings you continuous power.

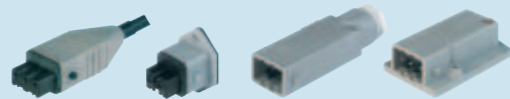


Without power, almost all the aspects of our modern life will quickly screech to a halt – and therefore, failure safety is indispensable, not only in the electro-medical field, but elsewhere as well. The rectangular connectors of the compact ST-series have been specially designed for power applications and are intended for current supply and signal transmission in industrial installations, in machinery manufacture as well as in indoor and outdoor building automation.

For this reason, you will find the universally stable ST-series both in small drives such as in shutters, tube and servo drives as well as in domestic water supply installations and in the mains voltage supply to lighting equipment, in wind turbine control systems and manufacturing equipments. The highly reliable rectangular connectors of the ST-series perform excellently even in current supply under extremely demanding conditions, for example in sensitive measuring devices.

The ST-series units are secured in place protected against vibrations, can be installed quickly and easily, resistant to sprayed water (IP 54) and can be supplied in both molded cable as well as discrete connector versions.

Rectangular connectors for building automation can also be used as mains and control cable connections – and thanks to solid contact technology, can resist even heavy vibrations.





咨询热线：028-61531718、61531807、61375957 网址：www.icos.hk


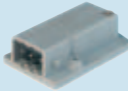







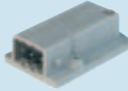
PROGRAM SURVEY ST-SERIES

RECTANGULAR CONNECTORS

Cable socket	
integrally molded lead	self-assembly
 <p>3-pole + PE from page 285</p>	 <p>2-pole + PE from page 284 3-pole + PE from page 286 4-pole + PE from page 287 5-pole + PE from page 287</p>

Panel-mounted socket	Surface mounted socket
 <p>2-pole + PE from page 288 3-pole + PE from page 289 5-pole + PE from page 289</p>	 <p>2-pole + PE from page 290 3-pole + PE from page 291 5-pole + PE from page 291</p>

Cable plug	
integrally molded lead	self-assembly
 <p>2-pole + PE from page 292 3-pole + PE from page 293 4-pole + PE from page 295</p>	 <p>2-pole + PE from page 292 3-pole + PE from page 293 5-pole + PE from page 295</p>

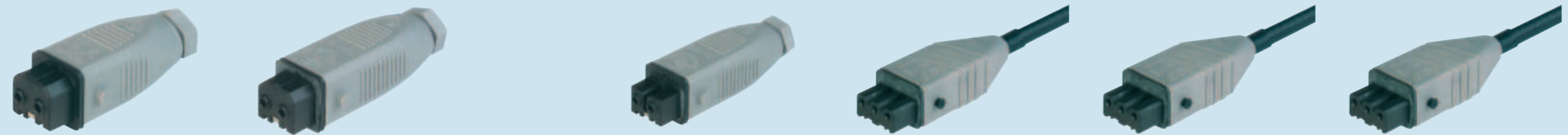
Panel-mounted connector	Surface mounted connector
 <p>2-pole + PE from page 296 3-pole + PE from page 297 5-pole + PE from page 297</p>	 <p>2-pole + PE from page 298 3-pole + PE from page 299 5-pole + PE from page 299</p>





RECTANGULAR CONNECTORS ST-SERIES

Cable socket



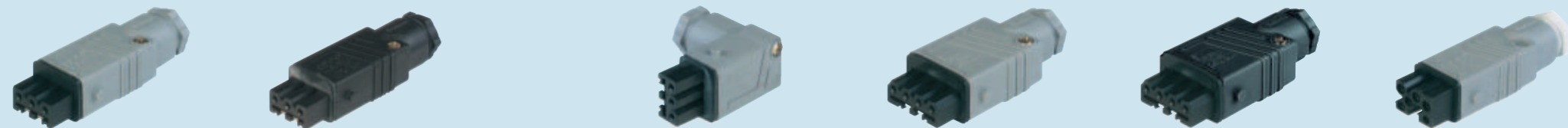
RECTANGULAR CONNECTORS ST-SERIES

Product description		Cable socket without strain relief	Cable socket with strain relief		Cable socket with strain relief and coding fin	Molded-on cable socket with harmonized lead (DIN VDE 0282)	Molded-on cable socket with harmonized lead (DIN VDE 0282)	Molded-on cable socket with harmonized lead (DIN VDE 0282)
Description								
Type	STAK 2 grau/grey	STAK 20 grau/grey			STAK 200 grau/grey	STAK 3 K 075 3025mm grau/grey	STAK 3 K 075 5m grau/grey	STAK 3 K 075 10m grau/grey
Order No.	930 621-106	931 264-106			932 037-106	932 187-011	932 187-015	932 187-016
Type of contact	female	female			female	female	female	female
Number of contacts	2 + PE	2 + PE			2 + PE	3 + PE	3 + PE	3 + PE
Cable color						black	black	black
Cable length						3 m	5 m	10 m
Cable gland	PG 7	PG 7			PG 7			
Cable diameter	4 mm to 6.5 mm	4 mm to 6.5 mm			4 mm to 6.5 mm	7.5 mm	7.5 mm	7.5 mm
Conductor size	max. 1.5 mm ²	max. 1.5 mm ²			max. 1.5 mm ²	0.75 mm ²	0.75 mm ²	0.75 mm ²
Cable specification						4 x 0.75 mm ²	4 x 0.75 mm ²	4 x 0.75 mm ²
Cable type						H05 RR-F4G 0,75	H05 RR-F4G 0,75	H05 RR-F4G 0,75
Housing Color	grey	grey			grey	grey	grey	grey
Contact bearer color	black	black			black	black	black	black
Drawing								
Technical data								
Pin dimensions	2 mm	2 mm			2 mm	2 mm	2 mm	2 mm
Rated voltage	250 V AC/DC	250 V AC/DC			250 V AC/DC	DC 250 V / AC 400 V	DC 250 V / AC 400 V	DC 250 V / AC 400 V
Rated current	DC 10 A / AC 16 A	DC 10 A / AC 16 A			DC 10 A / AC 16 A	DC 10 A / AC 10 A	DC 10 A / AC 10 A	DC 10 A / AC 10 A
Contact resistance	≤ 5 mOhm	≤ 5 mOhm			≤ 5 mOhm	≤ 5 mOhm	≤ 5 mOhm	≤ 5 mOhm
Type of termination	screw	screw			screw			
Material								
Contact material	Cu Zn	Cu Zn			Cu Zn	Cu Zn	Cu Zn	Cu Zn
Contact surface material	Sn	Sn			Sn	Sn	Sn	Sn
Contact bearer material	PA	PA			PA	PA	PA	PA
Housing material	PA	PA			PA	PA	PA	PA
Environmental conditions								
Protection class (IEC 60529)	IP 54	IP 54			IP 54	IP 54	IP 54	IP 54
Pollution severity	3	3			3	3	3	3
Temperature range	-30 °C to +90 °C	-30 °C to +90 °C			-30 °C to +90 °C	-30°C to +90°C (connector)/+60°C (cable)	-30°C to +90°C (connector)/+60°C (cable)	-30°C to +90°C (connector)/+60°C (cable)
Inflammability class								
Housing	UL 94 V-1	UL 94 V-1			UL 94 V-1	UL 94 V-1	UL 94 V-1	UL 94 V-1
Cable						VDE 0472 part 804	VDE 0472 part 804	VDE 0472 part 804
Contact bearer	UL 94 HB	UL 94 HB			UL 94 HB	UL 94 HB	UL 94 HB	UL 94 HB
Approvals								
UL	UL	UL			UL			
VDE					VDE	VDE	VDE	VDE
SEV					SEV	SEV	SEV	SEV
Packaging unit								
Packaging unit	100 pieces	100 pieces			100 pieces	75 pieces	40 pieces	20 pieces
Scope of delivery and accessories								
Accessories to order separately	safety brackets STASI 2, order no. 732 044-000	safety brackets STASI 2, order no. 732 044-000			safety brackets STASI 2, order no. 732 044-000	safety brackets STASI 3, order no. 732 045-000	safety brackets STASI 3, order no. 732 045-000	safety brackets STASI 3, order no. 732 045-000



RECTANGULAR CONNECTORS ST-SERIES

Cable socket



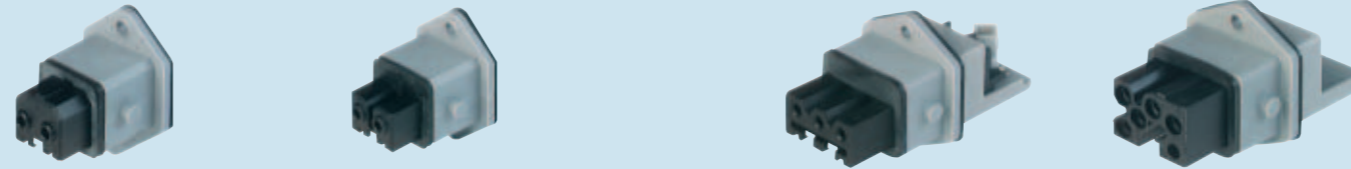
RECTANGULAR CONNECTORS ST-SERIES

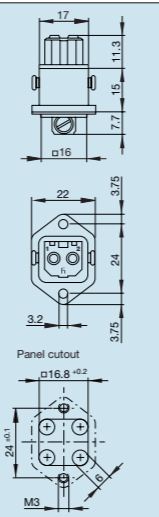
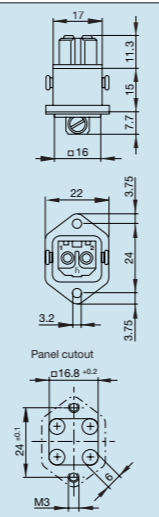
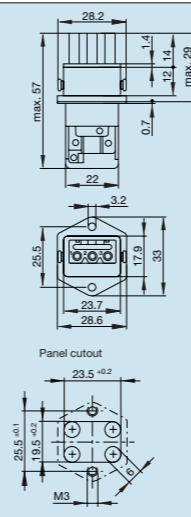
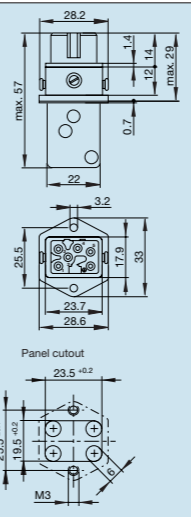
Product description		Cable socket with strain relief	Cable socket with strain relief		Angled cable socket	Cable socket with strain relief	Cable socket with strain relief	Cable socket with strain relief, not assembled with additional contacts and gasket
Description		Cable socket with strain relief	Cable socket with strain relief		Angled cable socket	Cable socket with strain relief	Cable socket with strain relief	Cable socket with strain relief, not assembled with additional contacts and gasket
Type		STAK 3 N grau/grey	STAK 3 N schwarz/black		STAKWI 3 grau/grey	STAK 4 grau/grey	STAK 4 schwarz/black	STAK 5 grau/grey
Order No.		932 140-106	932 140-100		932 413-106	932 533-106	932 533-100	931 691-106
Type of contact		female	female		female	female	female	female
Number of contacts		3 + PE	3 + PE		3 + PE	4 + PE	4 + PE	5 + PE
Cable color								
Cable length								
Cable gland		PG 11	PG 11		PG 11	PG 11	PG 11	PG 11
Cable diameter		6 mm to 10 mm	6 mm to 10 mm		6 mm to 10 mm	6 mm to 10 mm	6 mm to 10 mm	8 mm to 10 mm
Conductor size		max. 1.5 mm ²	max. 1.5 mm ²		max. 1.5 mm ²	max. 1.5 mm ²	max. 1.5 mm ²	max. 1 mm ²
Cable specification								
Cable type								
Housing Color		grey	black		grey	grey	black	grey
Contact bearer color		black	black		black	black	black	black
Drawing								
Technical data								
Pin dimensions		2 mm	2 mm		2 mm	2 mm	2 mm	1.6 mm
Rated voltage		DC 250 V / AC 400 V	DC 250 V / AC 400 V		DC 250 V / AC 400 V	DC 250 V / AC 400 V	DC 250 V / AC 400 V	DC 250 V / AC 400 V
Rated current		DC 10 A / AC 16 A	DC 10 A / AC 16 A		DC 10 A / AC 16 A	DC 10 A / AC 10 A	DC 10 A / AC 10 A	DC 10 A / AC 6 A
Contact resistance		≤ 5 mOhm	≤ 5 mOhm		≤ 5 mOhm	≤ 10 mOhm	≤ 10 mOhm	≤ 10 mOhm
Type of termination		screw	screw		screw	screw	screw	crimp
Material								
Contact material		Cu Zn	Cu Zn		Cu Zn	Cu Zn	Cu Zn	Cu Zn
Contact surface material		Sn	Sn		Sn	Sn	Sn	Ag
Contact bearer material		PA	PA		PA	PA	PA	PA
Housing material		PA	PA		PA	PA	PA	PA
Environmental conditions								
Protection class (IEC 60529)		IP 54	IP 54		IP 54	IP 54	IP 54	IP 54
Pollution severity		3	3		3	3	3	3
Temperature range		-30 °C to +90 °C	-30 °C to +90 °C		-30 °C to +90 °C	-30 °C to +90 °C	-30 °C to +90 °C	-30 °C to +90 °C
Inflammability class								
Housing		UL 94 V-1	UL 94 V-1		UL 94 V-1	UL 94 V-1	UL 94 V-1	UL 94 V-1
Cable								
Contact bearer		UL 94 HB	UL 94 HB		UL 94 HB	UL 94 HB	UL 94 HB	UL 94 HB
Approvals								
UL		UL	UL		UL			
VDE		VDE	VDE		VDE	VDE	VDE	VDE
SEV		SEV	SEV		SEV	SEV	SEV	SEV
Packaging unit								
Packaging unit		100 pieces	100 pieces		100 pieces	100 pieces	100 pieces	100 pieces
Scope of delivery and accessories								
Accessories to order separately		safety brackets STASI 3, order no. 732 045-001	safety brackets STASI 3, order no. 732 045-001		safety brackets STASI 3, order no. 732 045-001			safety brackets STASI 3, order no. 732 045-001



RECTANGULAR CONNECTORS ST-SERIES

Panel-mounted socket

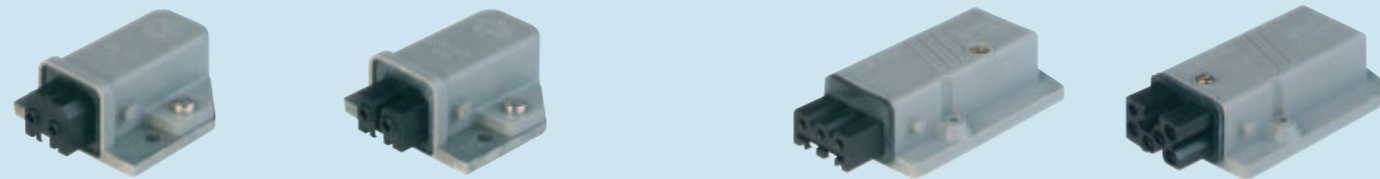


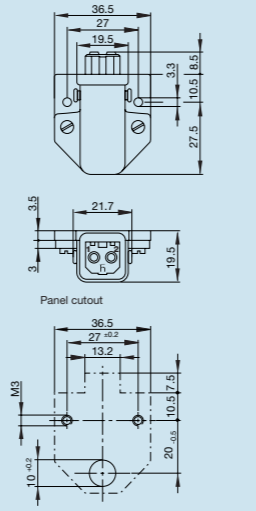
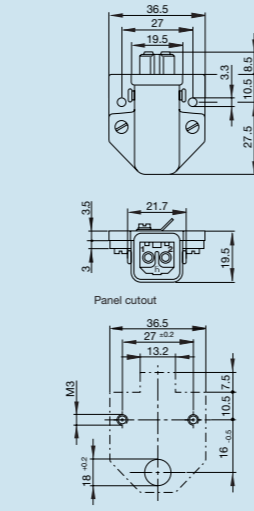
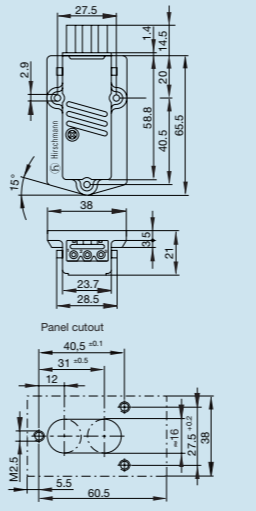
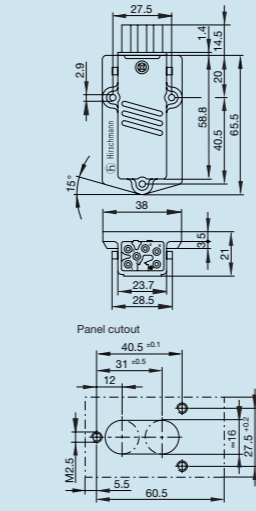
RECTANGULAR CONNECTORS ST-SERIES	Product description					
	Description	Panel-mounted socket, added gasket	Panel-mounted socket with coding slot and added gasket		Panel-mounted socket, added gasket	Panel-mounted connector, not assembled with added contacts and added gasket
	Type	STAKEI 2 grau/grey	STAKEI 200 grau/grey		STAKEI 3 N grau/grey	STAKEI 5 grau/grey
	Order No.	930 647-106	932 047-106		932 142-106	931 694-106
	Type of contact	female	female		female	female
	Number of contacts	2 + PE	2 + PE		3 + PE	5 + PE
	Conductor size	max. 1.5 mm ²	max. 1.5 mm ²		max. 1.5 mm ²	max. 1 mm ²
	Housing Color	grey	grey		grey	grey
	Contact bearer color	black	black		black	black
	Drawing					
Technical data						
Pin dimensions	2 mm	2 mm		2 mm	1.6 mm	
Rated voltage	250 V AC/DC	250 V AC/DC		DC 250 V / AC 400 V	DC 250 V / AC 400 V	
Rated current	DC 10 A / AC 16 A	DC 10 A / AC 16 A		DC 10 A / AC 16 A	DC 10 A / AC 6 A	
Contact resistance	≤ 5 mOhm	≤ 5 mOhm		≤ 5 mOhm	≤ 10 mOhm	
Type of termination	screws	screws		screws	screws	
Mounting						
Material						
Contact material	Cu Zn	Cu Zn		Cu Zn	Cu Zn	
Contact surface material	Sn	Sn		Sn	Ag	
Contact bearer material	PA	PA		PA	PA	
Housing material	PA	PA		PA	PA	
Environmental conditions						
Protection class (IEC 60529)	IP 54	IP 54		IP 54	IP 54	
Pollution severity	3	3		3	3	
Temperature range	-30 °C to +90 °C	-30 °C to +90 °C		-30 °C to +90 °C	-30 °C to +90 °C	
Inflammability class						
Housing	UL 94 V-1	UL 94 V-1		UL 94 V-1	UL 94 V-1	
Contact bearer	UL 94 HB	UL 94 HB		UL 94 HB	UL 94 HB	
Approvals						
UL	UL	UL		UL		
VDE		VDE		VDE	VDE	
SEV		SEV		SEV	SEV	
Packaging unit						
Packaging unit	100 pieces	100 pieces		100 pieces	100 pieces	
Scope of delivery and accessories						
Accessories to order separately	safety brackets STASI 2, order no. 732 044-000	safety brackets STASI 2, order no. 732 044-000		safety brackets STASI 3, order no. 732 045-001	safety brackets STASI 3, order no. 732 045-001	



RECTANGULAR CONNECTORS ST-SERIES

Surface mounted socket

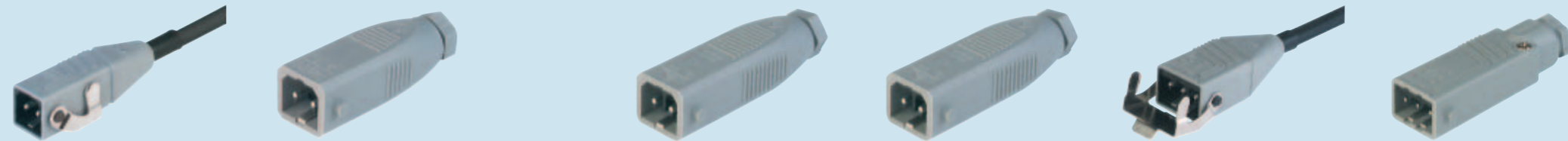


RECTANGULAR CONNECTORS ST-SERIES	Product description					
	Description	Surface mounted socket with cast baseplate	Surface mounted socket with cast baseplate and coding slot		Surface mounted socket	Surface mounted socket, not assembled with added contacts
	Type	STAKAP 2 grau/grey	STAKAP 200 grau/grey		STAKAP 3 N grau/grey	STAKAP 5 grau/grey
	Order No.	932 329-106	932 045-106		932 513-106	932 511-106
	Type of contact	female	female		female	female
	Number of contacts	2 + PE	2 + PE		3 + PE	5 + PE
	Conductor size	max. 1.5 mm ²	max. 1.5 mm ²		max. 1.5 mm ²	max. 1 mm ²
	Housing Color	grey	grey		grey	grey
	Contact bearer color	black	black		black	black
	Drawing					
Technical data						
Pin dimensions	2 mm	2 mm		2 mm	1.6 mm	
Rated voltage	250 V AC/DC	250 V AC/DC		DC 250 V / AC 400 V	DC 250 V / AC 400 V	
Rated current	DC 10 A / AC 16 A	DC 10 A / AC 16 A		DC 10 A / AC 16 A	DC 10 A / AC 6 A	
Contact resistance	≤ 5 mOhm	≤ 5 mOhm		≤ 5 mOhm	≤ 10 mOhm	
Type of termination	screws	screws		screws	screws	
Mounting						
Material						
Contact material	Cu Zn	Cu Zn		Cu Zn	Cu Zn	
Contact surface material	Sn	Sn		Sn	Ag	
Contact bearer material	PA	PA		PA	PA	
Housing material	PA	PA		PA	PA	
Environmental conditions						
Protection class (IEC 60529)	IP 54	IP 54		IP 54	IP 54	
Pollution severity	3	3		3	3	
Temperature range	-30 °C to +90 °C	-30 °C to +90 °C		-30 °C to +90 °C	-30 °C to +90 °C	
Inflammability class						
Housing	UL 94 V-1	UL 94 V-1		UL 94 V-1	UL 94 V-1	
Contact bearer	UL 94 HB	UL 94 HB		UL 94 HB	UL 94 HB	
Approvals						
UL	UL	UL		UL		
VDE		VDE		VDE	VDE	
SEV		SEV		SEV	SEV	
Packaging unit						
Packaging unit	100 pieces	100 pieces		100 pieces	100 pieces	
Scope of delivery and accessories						
Accessories to order separately	safety brackets STASI 2, order no. 732 044-000	safety brackets STASI 2, order no. 732 044-000		safety brackets STASI 3, order no. 732 045-001	safety brackets STASI 3, order no. 732 045-001	



RECTANGULAR CONNECTORS ST-SERIES

Cable plug



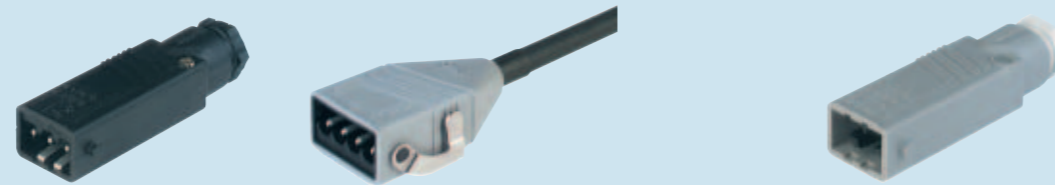
RECTANGULAR CONNECTORS ST-SERIES

Product description	Molded-on cable plug with harmonized lead (DIN VDE 0282) and safety bracket	Cable plug without strain relief		Cable plug with strain relief	Cable plug with strain relief and coding fin	Molded-on cable plug with harmonized lead (DIN VDE 0282) and safety bracket	Cable plug with strain relief
Type	STAS 2 K 075 SI 1000mm grau/grey	STAS 2 grau/grey		STAS 20 grau/grey	STAS 200 grau/grey	STAS 3 K 075 SI 1000mm grau/grey	STAS 3 N grau/grey
Order No.	972 246-008	930 620-106		931 265-106	932 038-106	931 300-055	932 143-106
Type of contact	male	male		male	male	male	male
Number of contacts	2 + PE	2 + PE		2 + PE	2 + PE	3 + PE	3 + PE
Cable color	black					black	
Cable length	1000 mm					1000 mm	
Cable gland		PG 7		PG 7	PG 7		PG 11
Cable diameter	6.6 mm	4 mm to 6.5 mm		4 mm to 6.5 mm	4 mm to 6.5 mm	7.5 mm	6 mm to 10 mm
Conductor size	0.75 mm ²	max. 1.5 mm ²		max. 1.5 mm ²	max. 1.5 mm ²	0.75 mm ²	max. 1.5 mm ²
Cable specification	3 x 0,75 mm ²					4 x 0,75 mm ²	
Cable type	H05 RR-F3G 0,75					H05 RR-F4G 0,75	
Housing Color	grey	grey		grey	grey	grey	grey
Contact bearer color	black	black		black	black	black	black
Drawing							
Technical data							
Pin dimensions	2 mm	2 mm		2 mm	2 mm	2 mm	2 mm
Rated voltage	DC 250 V / AC 400 V	250 V AC/DC		250 V AC/DC	250 V AC/DC	DC 250 V / AC 400 V	DC 250 V / AC 400 V
Rated current	DC 10 A / AC 10 A	DC 10 A / AC 16 A		DC 10 A / AC 16 A	DC 10 A / AC 16 A	DC 10 A / AC 10 A	DC 10 A / AC 16 A
Contact resistance	≤ 5 mOhm	≤ 5 mOhm		≤ 5 mOhm	≤ 5 mOhm	≤ 5 mOhm	≤ 5 mOhm
Type of termination		screw		screw	screw		screw
Material							
Contact material	Cu Zn	Cu Zn		Cu Zn	Cu Zn	Cu Zn	Cu Zn
Contact surface material	Sn	Sn		Sn	Sn	Sn	Sn
Contact bearer material	PA	PA		PA	PA	PA	PA
Housing material	PA	PA		PA	PA	PA	PA
Environmental conditions							
Protection class (IEC 60529)	IP 54	IP 54		IP 54	IP 54	IP 54	IP 54
Pollution severity	3	3		3	3	3	3
Temperature range	-30°C to +90°C (connector)/+60°C (cable)	-30 °C to +90 °C		-30 °C to +90 °C	-30 °C to +90 °C	-30°C to +90°C (connector)/+60°C (cable)	-30 °C to +90 °C
Inflammability class							
Housing	UL 94 V-1	UL 94 V-1		UL 94 V-1	UL 94 V-1	UL 94 V-1	UL 94 V-1
Cable	VDE 0472 part 804					VDE 0472 part 804	
Contact bearer	UL 94 HB	UL 94 HB		UL 94 HB	UL 94 HB	UL 94 HB	UL 94 HB
Approvals							
UL		UL		UL	UL		UL
VDE	VDE				VDE	VDE	VDE
SEV	SEV				SEV	SEV	SEV
Packaging unit							
Packaging unit	75 pieces	100 pieces		100 pieces	100 pieces	50 pieces	100 pieces
Scope of delivery and accessories							
Accessories to order separately		safety brackets STASI 2, order no. 732 044-000		safety brackets STASI 2, order no. 732 044-000	safety brackets STASI 2, order no. 732 044-000		safety brackets STASI 3, order no. 732 045-001



RECTANGULAR CONNECTORS ST-SERIES

Cable plug



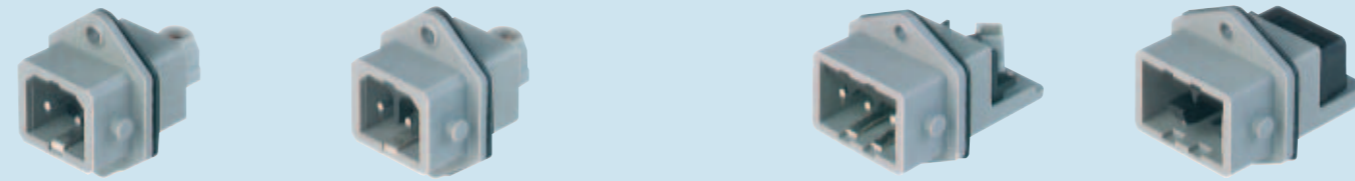
RECTANGULAR CONNECTORS ST-SERIES

Product description						
Description	Cable plug with strain relief	Molded-on cable plug with harmonized lead (DIN VDE 0282) and safety bracket		Cable plug with strain relief, not assembled with additional contacts		
Type	STAS 3 N schwarz/black	STAS 4 K 075 SI 1000mm grau/grey		STAS 5 grau/grey		
Order No.	932 143-100	932 578-011		931 692-106		
Type of contact	male	male		male		
Number of contacts	3 + PE	4 + PE		5 + PE		
Cable color	black	black				
Cable length		1000 mm				
Cable gland	PG 11			PG 11		
Cable diameter	6 mm to 10 mm	8.2 mm		8 mm to 10 mm		
Conductor size	max. 1.5 mm ²	0.75 mm ²		max. 1 mm ²		
Cable specification		5 x 0.75 mm ²				
Cable type		H05 RR-F5G 0,75				
Housing Color	black	grey		grey		
Contact bearer color	black	black		black		
Drawing						
Technical data						
Pin dimensions	2 mm	2 mm		1.6 mm		
Rated voltage	DC 250 V / AC 400 V	DC 250 V / AC 400 V		DC 250 V / AC 400 V		
Rated current	DC 10 A / AC 16 A	DC 10 A / AC 10 A		DC 10 A / AC 6 A		
Contact resistance	≤ 5 mOhm	≤ 5 mOhm		≤ 10 mOhm		
Type of termination	screw			crimp		
Material						
Contact material	Cu Zn	Cu Zn		Cu Zn		
Contact surface material	Sn	Sn		Ag		
Contact bearer material	PA	PA		PA		
Housing material	PA	PA		PA		
Environmental conditions						
Protection class (IEC 60529)	IP 54	IP 54		IP 54		
Pollution severity	3	3		3		
Temperature range	-30 °C to +90 °C	-30°C to +90°C (connector)/+60°C (cable)		-30 °C to +90 °C		
Inflammability class						
Housing	UL 94 V-1	UL 94 V-1		UL 94 V-1		
Cable		VDE 0472 part 804				
Contact bearer	UL 94 HB	UL 94 HB		UL 94 HB		
Approvals						
UL	UL					
VDE	VDE	VDE		VDE		
SEV	SEV	SEV		SEV		
Packaging unit						
Packaging unit	100 pieces	50 pieces		100 pieces		
Scope of delivery and accessories						
Accessories to order separately	safety brackets STASI 3, order no. 732 045-001			safety brackets STASI 3, order no. 732 045-001		



RECTANGULAR CONNECTORS ST-SERIES

Panel-mounted connector

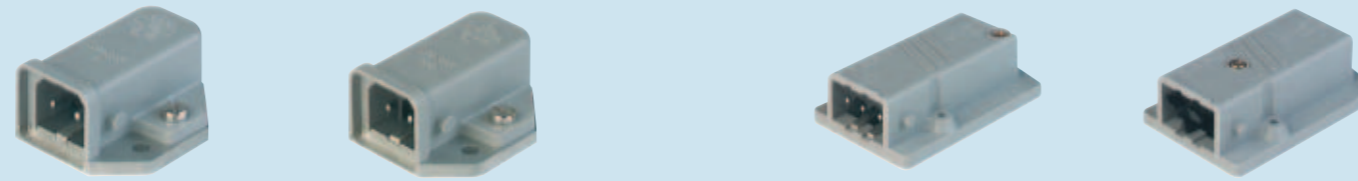


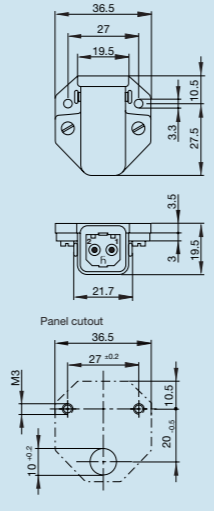
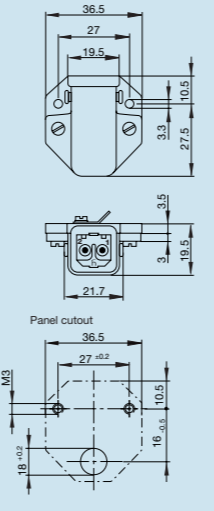
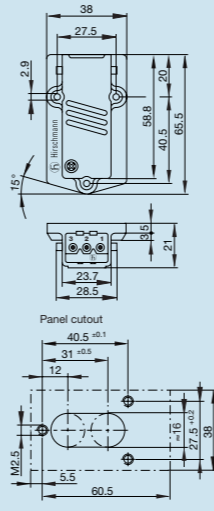
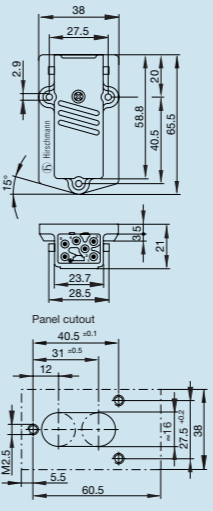
Product description	Panel-mounted connector with added gasket		Panel-mounted connector with coding fin and added gasket		Panel-mounted connector with added gasket		Panel-mounted connector, not assembled with added contacts and added gasket	
	STASEI 2 grau/grey	932 622-106	STASEI 200 grau/grey	932 048-106	STASEI 3 N grau/grey	932 145-106	STASEI 5 grau/grey	931 697-106
Type	male		male		male		male	
Order No.	932 622-106		932 048-106		932 145-106		931 697-106	
Type of contact	male		male		male		male	
Number of contacts	2 + PE		2 + PE		3 + PE		5 + PE	
Cable diameter								
Conductor size	max. 1.5 mm ²		max. 1.5 mm ²		max. 1.5 mm ²		max. 1 mm ²	
Housing Color	grey		grey		grey		grey	
Contact bearer color	black		black		black		black	
Drawing								
Technical data								
Pin dimensions	2 mm		2 mm		2 mm		2 mm	
Rated voltage	250 V AC/DC		250 V AC/DC		DC 250 V / AC 400 V		DC 250 V / AC 400 V	
Rated current	DC 10 A / AC 16 A		DC 10 A / AC 16 A		10 A DC / 16 A AC		DC 10 A / AC 6 A	
Contact resistance	≤ 5 mOhm		≤ 5 mOhm		≤ 5 mOhm		≤ 10 mOhm	
Type of termination	screws		screws		screws		screws	
Mounting								
Material								
Contact material	Cu Zn		Cu Zn		Cu Zn		Cu Zn	
Contact surface material	Sn		Sn		Sn		Ag	
Contact bearer material	PA		PA		PA		PA	
Housing material	PA		PA		PA		PA	
Environmental conditions								
Protection class (IEC 60529)	IP 54		IP 54		IP 54		IP 54	
Pollution severity	3		3		3		3	
Temperature range	-30 °C to +90 °C		-30 °C to +90 °C		-30 °C to +90 °C		-30 °C to +90 °C	
Inflammability class								
Housing	UL 94 V-1		UL 94 V-1		UL 94 V-1		UL 94 V-1	
Cable								
Contact bearer	UL 94 HB		UL 94 HB		UL 94 HB		UL 94 HB	
Approvals								
UL	UL		UL		UL			
VDE			VDE		VDE		VDE	
SEV			SEV		SEV		SEV	
Packaging unit								
Packaging unit	100 pieces		100 pieces		100 pieces		100 pieces	
Scope of delivery and accessories								
Accessories to order separately	safety brackets STASI 2, order no. 732 044-000		safety brackets STASI 2, order no. 732 044-000		safety brackets STASI 3, order no. 732 045-001		safety brackets STASI 3, order no. 732 045-001	



RECTANGULAR CONNECTORS ST-SERIES

Surface mounted connector



RECTANGULAR CONNECTORS ST-SERIES	Product description					
	Description	Surface mounted connector with cast base-plate, additional sealing for IP 54 necessary	Surface mounted connector with cast base-plate and coding fin, additional sealing for IP 54 necessary	Surface mounted connector	Surface mounted connector, not assembled with added contacts	
	Type	STASAP 2 B grau/grey	STASAP 200 grau/grey	STASAP 3 N grau/grey	STASAP 5 grau/grey	
	Order No.	932 822-106	932 046-106	932 514-106	932 512-106	
	Type of contact	male	male	male	male	
	Number of contacts	2 + PE	2 + PE	3 + PE	5 + PE	
	Conductor size	max. 1.5 mm ²	max. 1.5 mm ²	max. 1.5 mm ²	max. 1 mm ²	
	Housing Color	grey	grey	grey	grey	
	Contact bearer color	black	black	black	black	
	Drawing					
Technical data						
Pin dimensions	2 mm	2 mm	2 mm	1.6 mm		
Rated voltage	250 V AC/DC	250 V AC/DC	DC 250 V / AC 400 V	DC 250 V / AC 400 V		
Rated current	DC 10 A / AC 16 A	DC 10 A / AC 16 A	DC 10 A / AC 16 A	DC 10 A / AC 6 A		
Contact resistance	≤ 5 mOhm	≤ 5 mOhm	≤ 5 mOhm	≤ 10 mOhm		
Type of termination	screws	screws	screws	screws		
Mounting						
Material						
Contact material	Cu Zn	Cu Zn	Cu Zn	Cu Zn		
Contact surface material	Sn	Sn	Sn	Ag		
Contact bearer material	PA	PA	PA	PA		
Housing material	PA	PA	PA	PA		
Environmental conditions						
Protection class (IEC 60529)	IP 54	IP 54	IP 54	IP 54		
Pollution severity	3	3	3	3		
Temperature range	-30 °C to +90 °C	-30 °C to +90 °C	-30 °C to +90 °C	-30 °C to +90 °C		
Inflammability class						
Housing	UL 94 V-1	UL 94 V-1	UL 94 V-1	UL 94 V-1		
Contact bearer	UL 94 HB	UL 94 HB	UL 94 HB	UL 94 HB		
Approvals						
UL	UL	UL	UL			
VDE		VDE	VDE	VDE		
SEV		SEV	SEV	SEV		
Packaging unit						
Packaging unit	100 pieces	100 pieces	100 pieces	100 pieces		
Scope of delivery and accessories						
Accessories to order separately	safety brackets STASI 2, order no. 732 044-000	safety brackets STASI 2, order no. 732 044-000	safety brackets STASI 3, order no. 732 045-001	safety brackets STASI 3, order no. 732 045-001		



RECTANGULAR CONNECTORS ST-SERIES

Accessories ST-series



RECTANGULAR CONNECTORS ST-SERIES

Product description		
Description	Safety brackets for 2 + PE - versions	Safety brackets for 3 + PE and 5 + PE - versions
Type	STASI 2	STASI 3
Order No.	732 044-000	732 045-001
Drawing		
Material		
Housing material	tin-plated brass	tin-plated brass
Packaging unit		
Packaging unit	100 pieces	100 pieces